

Medical Office Space

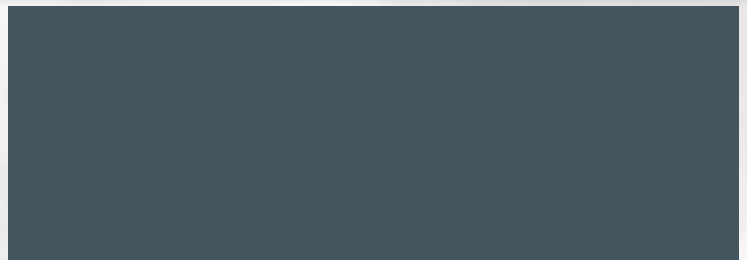
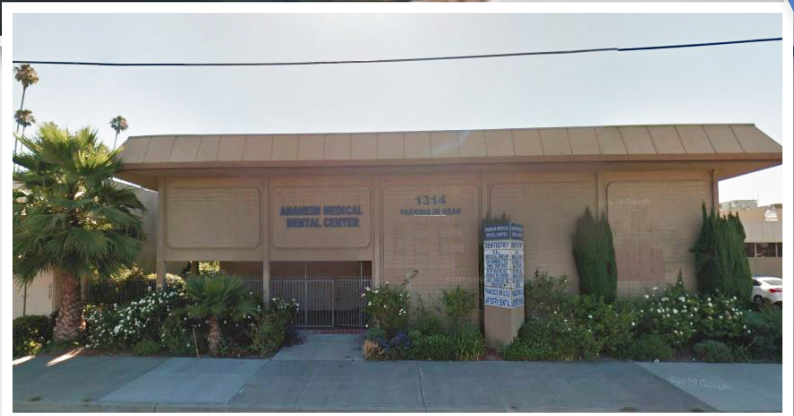
1314 S EUCLID STREET | ANAHEIM, CA 92802

FOR LEASE | ± 745 - 3,195 SF



Property Features

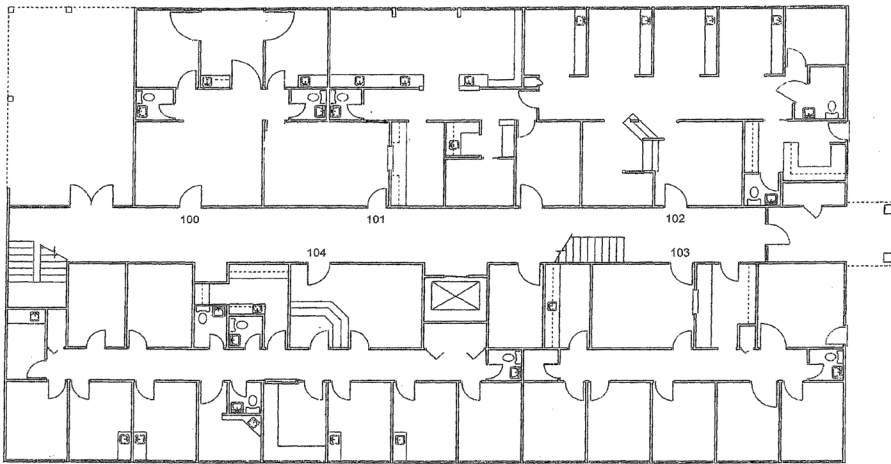
- Ideal for Medical Office
- Wide range of Physician Specialties
- Central Anaheim location
- Medical-Ready offices
- Available for immediate occupancy
- Adjacent to DaVita Dialysis



Medical Office Space

1314 S EUCLID STREET | ANAHEIM, CA 92802

FOR LEASE | ± 745 - 3,195 SF



FIRST FLOOR

AVAILABLE SUITES:

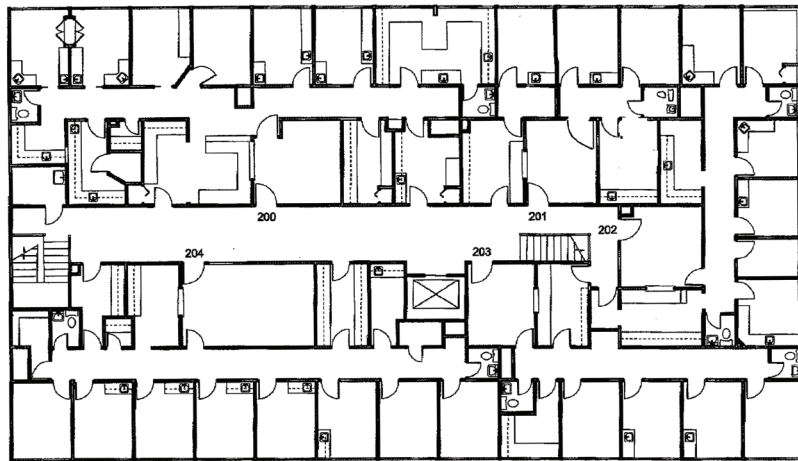
100 - 1,141 SF

101 - 745 SF

102 - 1,309 SF

103 - 1,418 SF

** suites 100, 101, & 102 can be
combined for ± 3,195 SF*



SECOND FLOOR

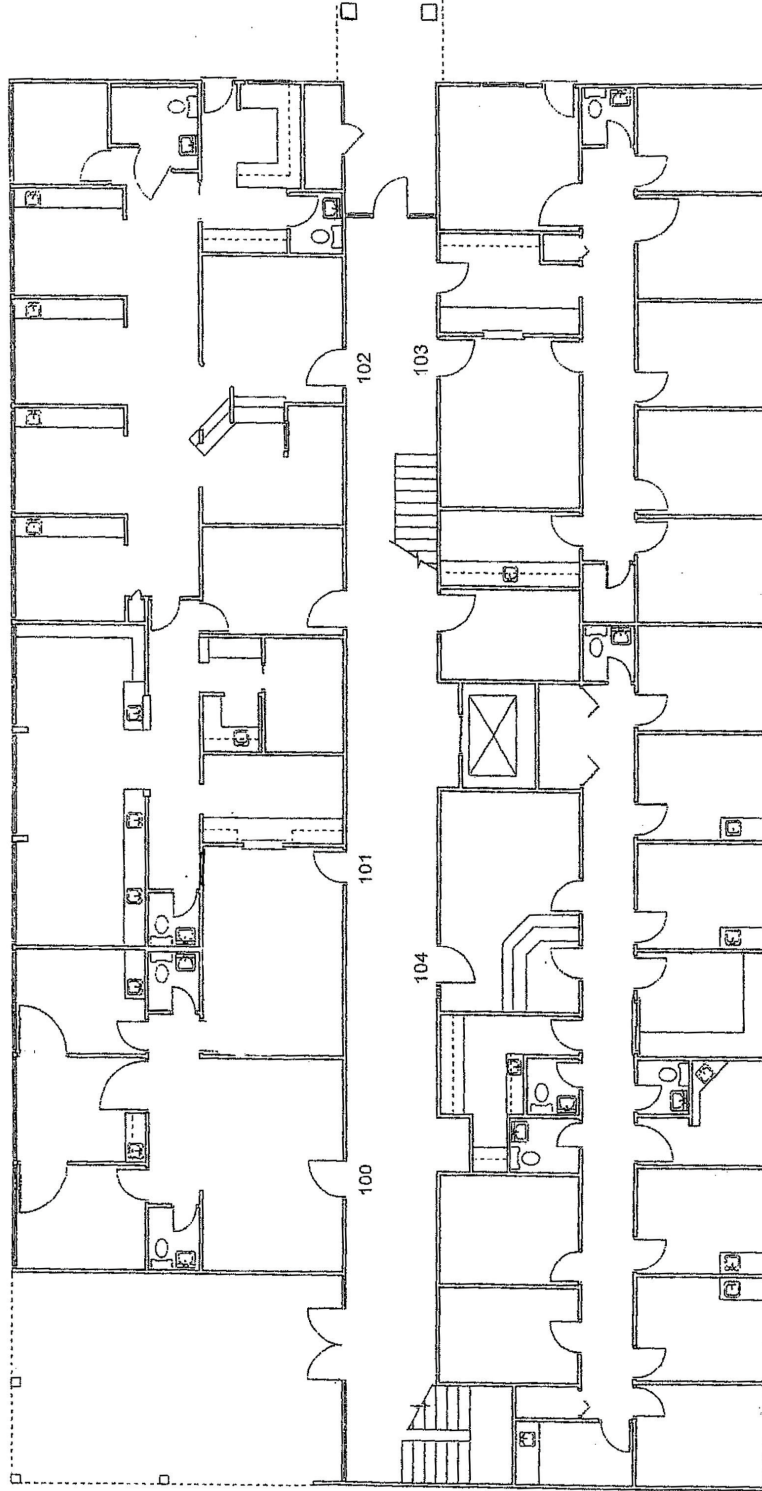
AVAILABLE SUITES:

201 - 2,102 SF

208 - 1,656 SF

Medical Office Space

1314 S EUCLID STREET | ANAHEIM, CA 92802



FIRST FLOOR

AVAILABLE SUITES:

100 - 1,141 SF

101 - 745 SF

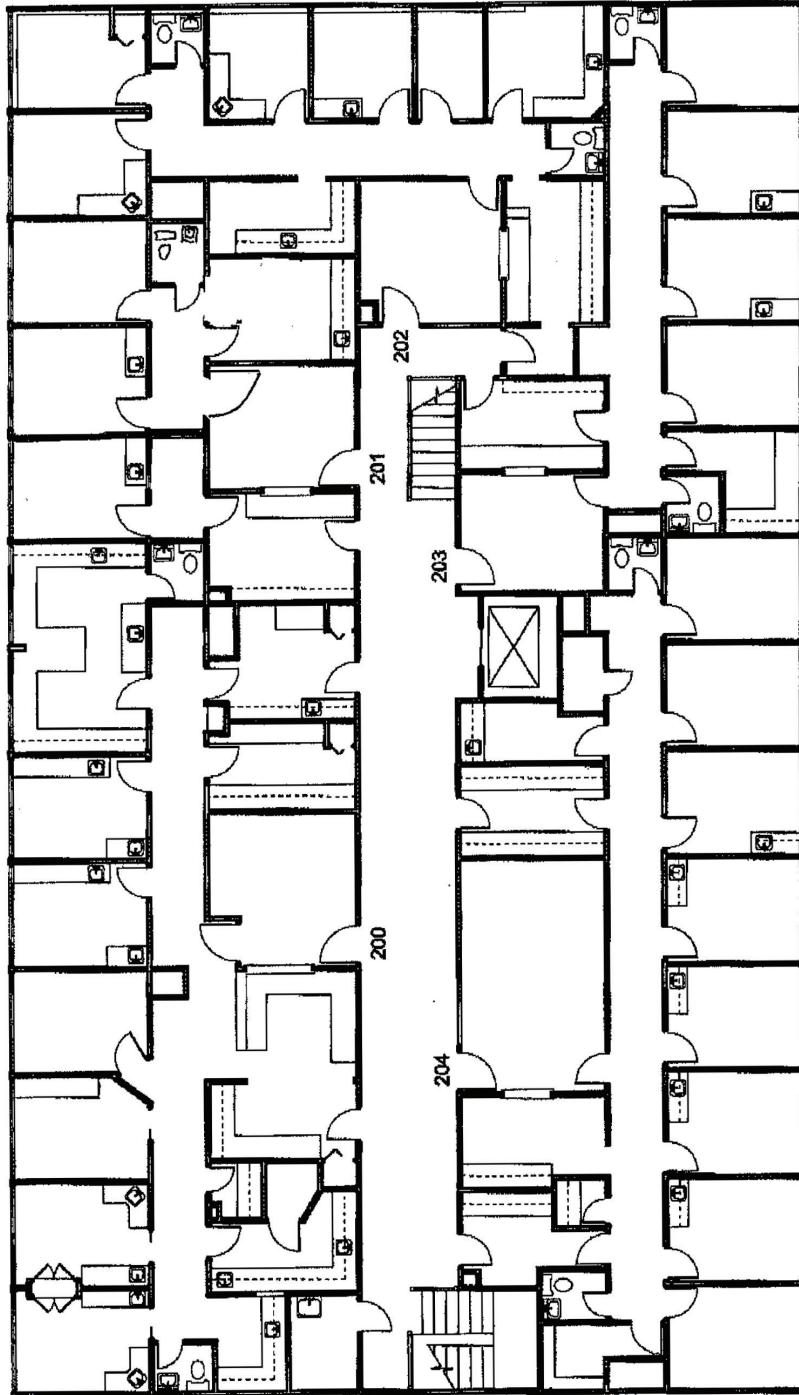
102 - 1,309 SF

103 - 1,418 SF

* suites 100, 101, & 102 can be combined for ± 3,195 SF

Medical Office Space

1314 S EUCLID STREET | ANAHEIM, CA 92802



SECOND FLOOR
AVAILABLE SUITES:
201 - 2,102 SF
208 - 1,656 SF