

FOR LEASE

SUITE 103: ±2,000-4,000 RSF MEDICAL SUITE | READY TO MOVE IN



15825

LAGUNA CANYON ROAD | IRVINE, CALIFORNIA

PROPERTY FEATURES

- A Medical Suite Ranging From 2,000 to 4,000 SF
- Available September 1, 2021
- Rare Availability
- Highly Improved Medical Suite
- Easy Access to 405 & 5 Freeways and 133 Toll Road
- 43,000 SF Medical Office Building
- Near Hoag Irvine and Saddleback Memorial
- Home of Specialty Surgical Center
- Retail Amenities Nearby
- Fully Furnished Medical Suite Possible
- Perfect Suite for An Orthopedic Surgeon, Podiatrist, Pain Management or Chiropractor Uses
- Call For Details

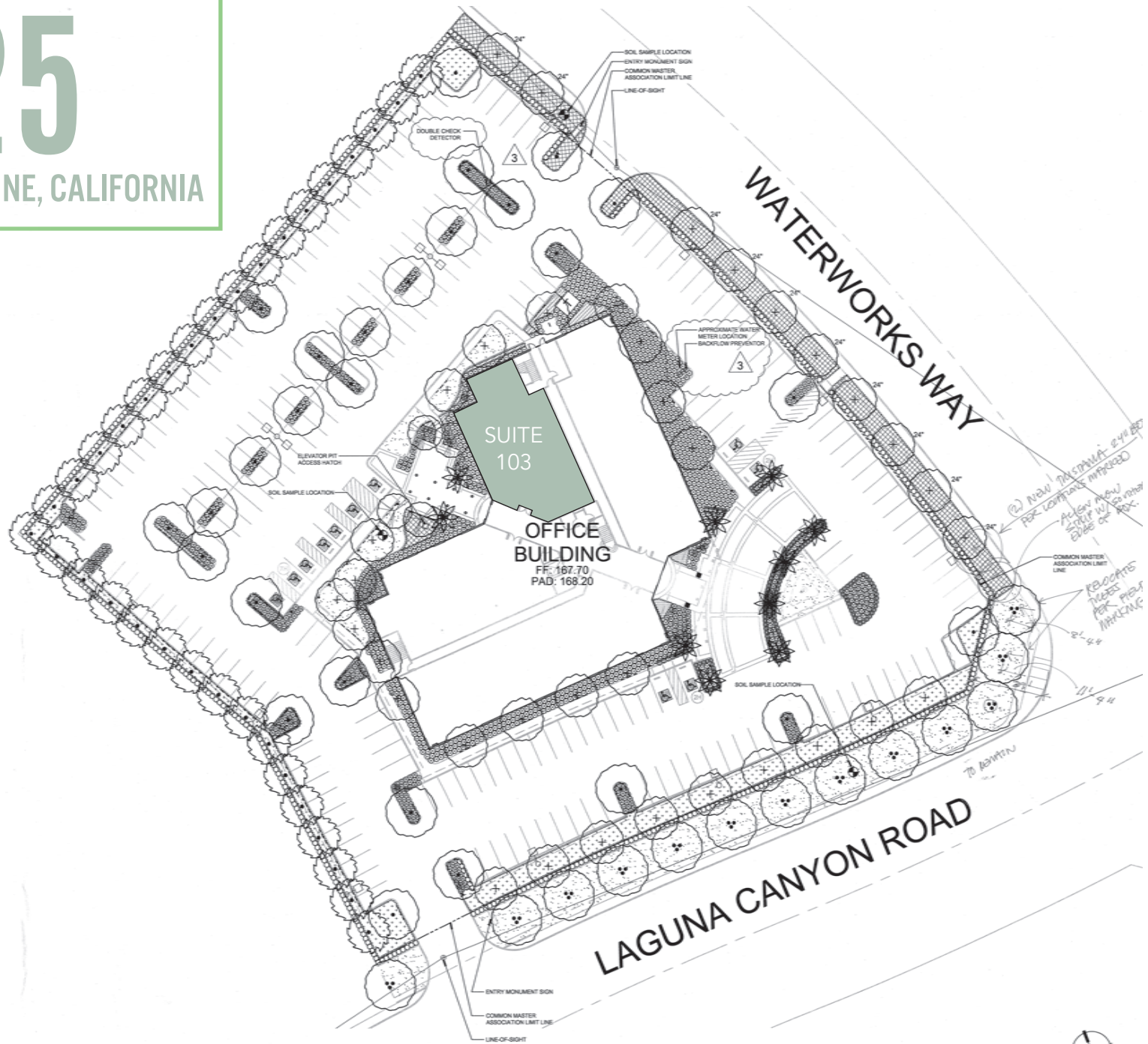


15825

LAGUNA CANYON ROAD | IRVINE, CALIFORNIA
SPECTRUM MEDICAL PLAZA

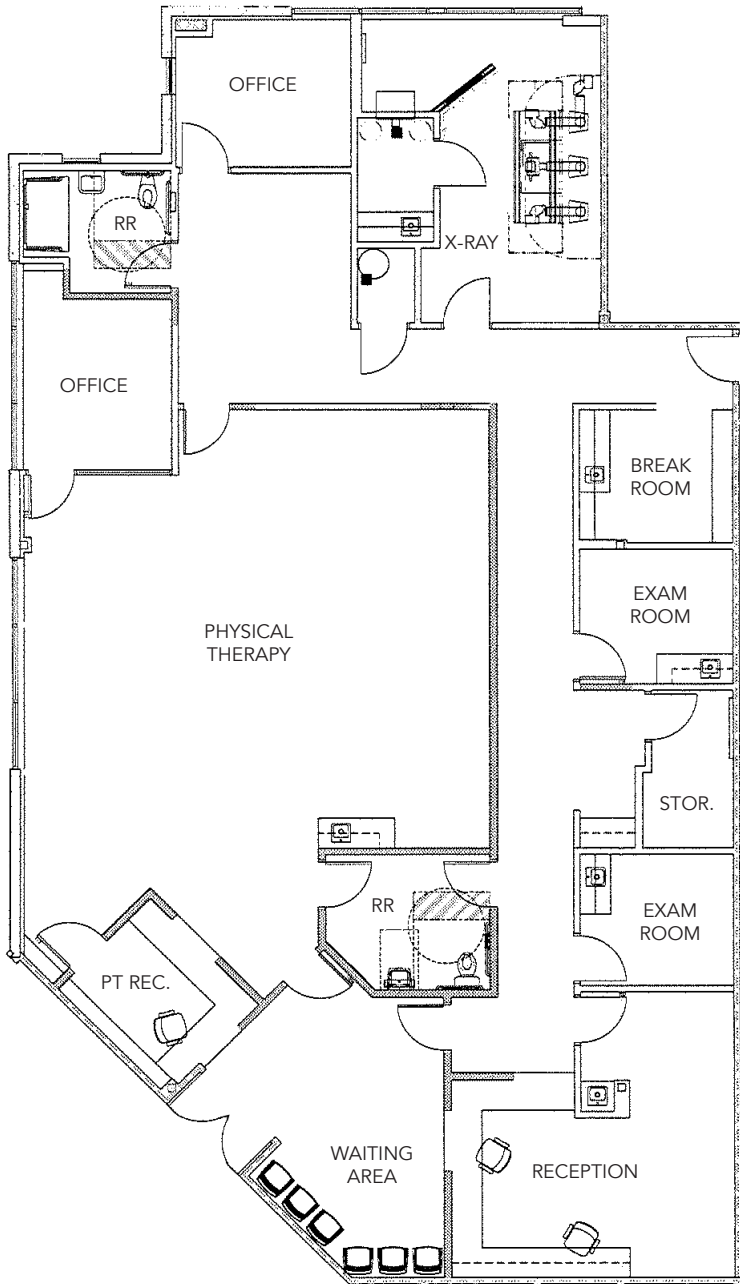
15825

LAGUNA CANYON ROAD | IRVINE, CALIFORNIA

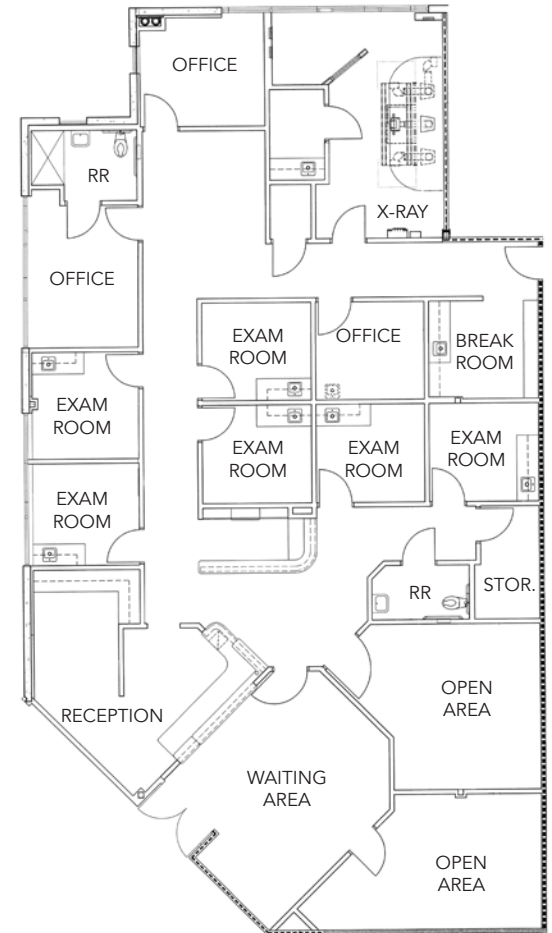
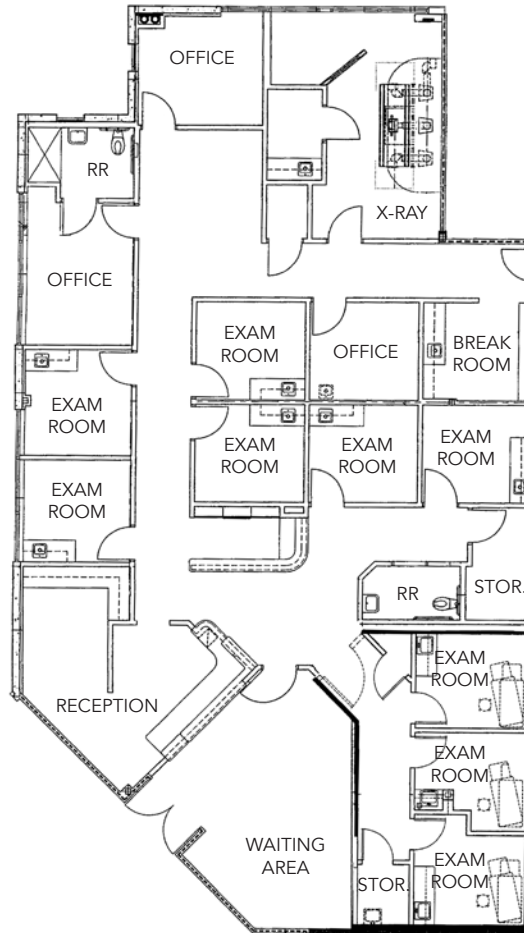


SITE PLAN

CURRENT LAYOUT



HYPOTHETICAL LAYOUTS



15825
LAGUNA CANYON ROAD | IRVINE, CALIFORNIA



5

15825
LAGUNA CANYON RD

SAND CANYON AVE

LAGUNA CANYON RD

WATERWORKS WAY

IRVINE CENTER DR

BARRANCA PKWY

ALTON PKWY



CALIFORNIA

133



405



KAISER
PERMANENTE