

Medical Office Space

302 WEST LA VETA | ORANGE, CA 92868

FOR LEASE | 2ND FLOOR, APPROX. 4,465 SF



Amenities & Highlights

- **Suite 201**
- 8 - 10 Exam Rooms
- Several Private Offices
- 2 Restrooms
- Reception Area
- Large Waiting Area
- Nice Window Line
- Great Freeway Access to the 5 and 22 Freeways
- Down the Street from St. Joseph Hospital of Orange



Medical Office Space

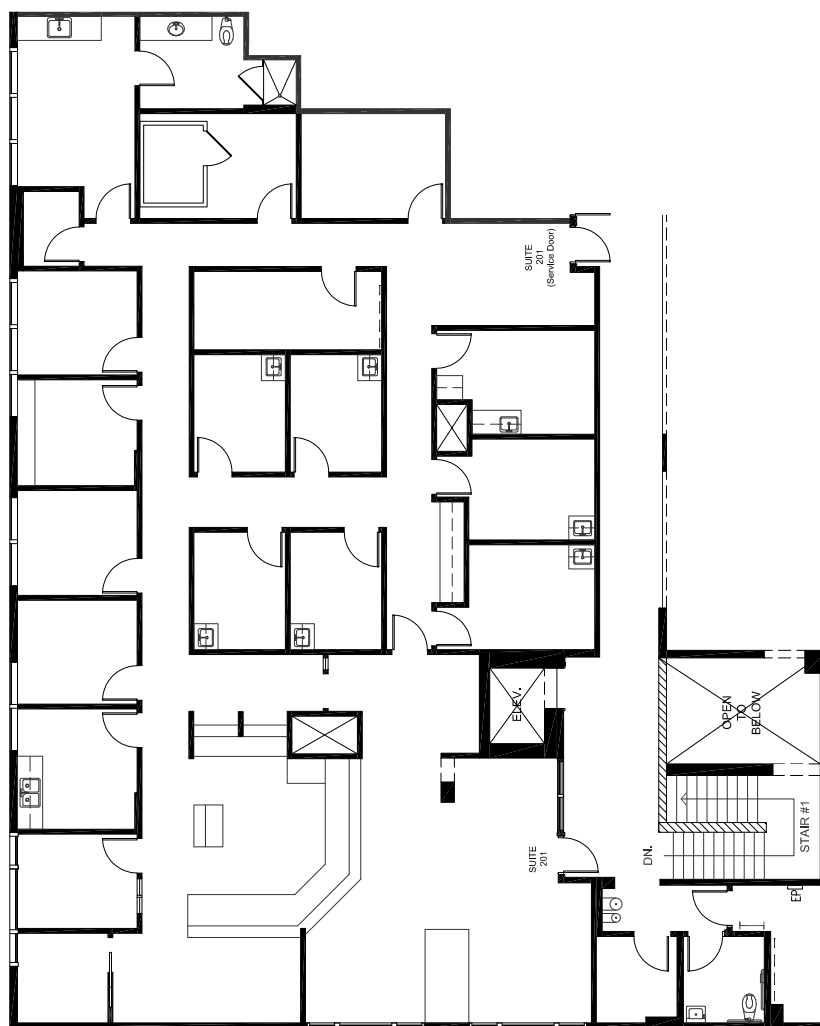
302 WEST LA VETA | ORANGE, CA 92868

FOR LEASE | 2ND FLOOR, APPROX. 4,465 SF



Medical Office Space

302 WEST LA VETA | ORANGE, CA 92868



Suite 201 (4,465 RSF)

302 W. La Veta Avenue, Orange, CA 92866