

Citrus-Chapman Medical Building

1031 W. Chapman Avenue, Orange, CA 92868



*Medical or Dental
Suite for Lease*

Citrus-Chapman Medical Building

1031 W. Chapman Avenue, Orange, CA 92868



FEATURES:

- 2,853 SF Available
- Chapman Street Front
- Abundant Free Surface Parking
- Near Retail Amenities
- Close proximity to St. Joseph Hospital and CHOC
- Shell space
- Generous TI Allowance



*Medical or Dental
Suite for Lease*

Citrus-Chapman Medical Building

1031 W. Chapman Avenue, Orange, CA 92868

BIRD'S EYE VIEW:

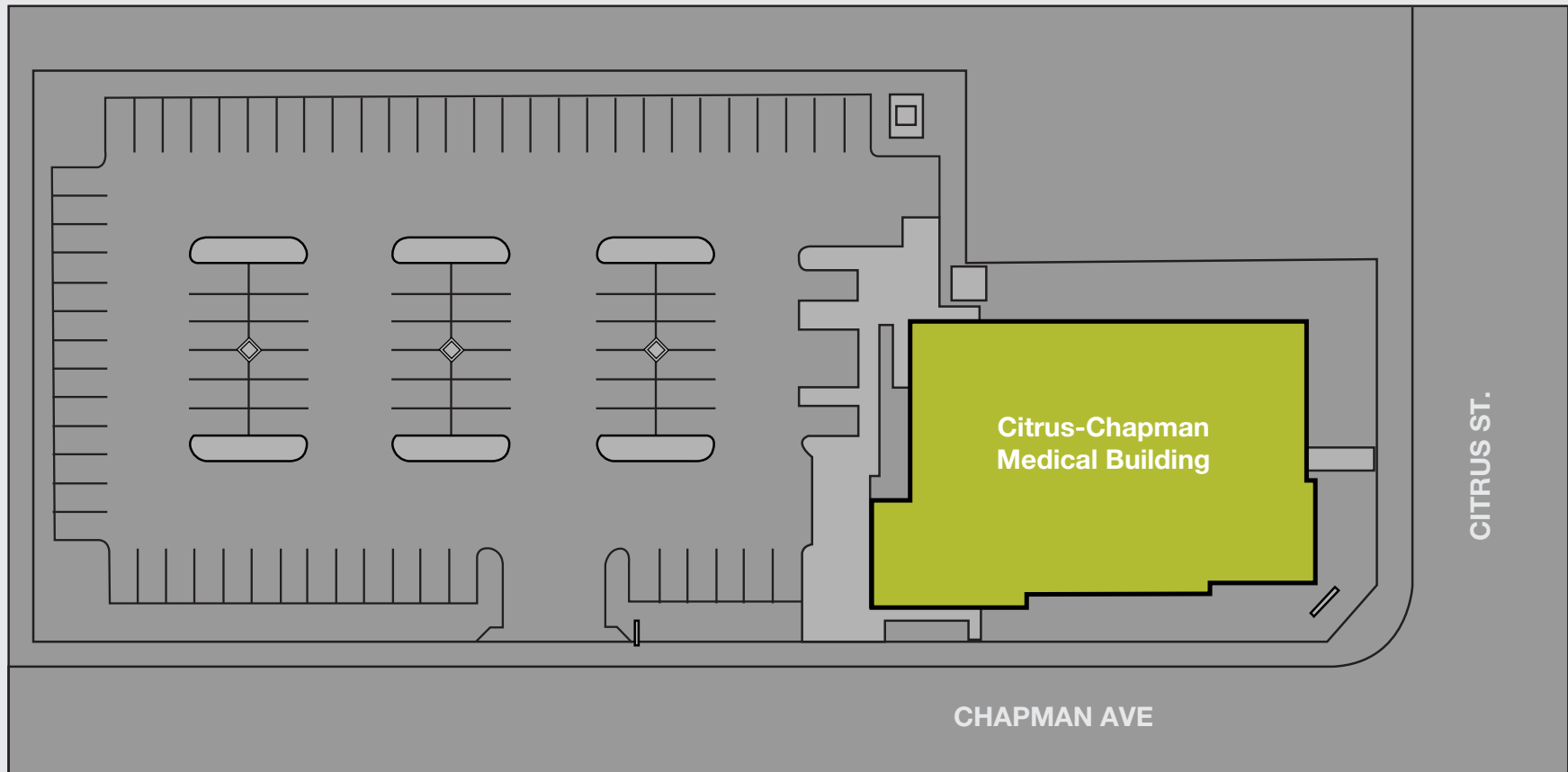


Medical or Dental
Suite for Lease

Citrus-Chapman Medical Building

1031 W. Chapman Avenue, Orange, CA 92868

SITE PLAN:



*Medical or Dental
Suite for Lease*

Citrus-Chapman Medical Building

1031 W. Chapman Avenue, Orange, CA 92868

Suite 202 - 2,853 SF

Suite Description:

Shell condition.
Ready for Tenant's
Customization

Lease Rate:

\$2.95 NNN

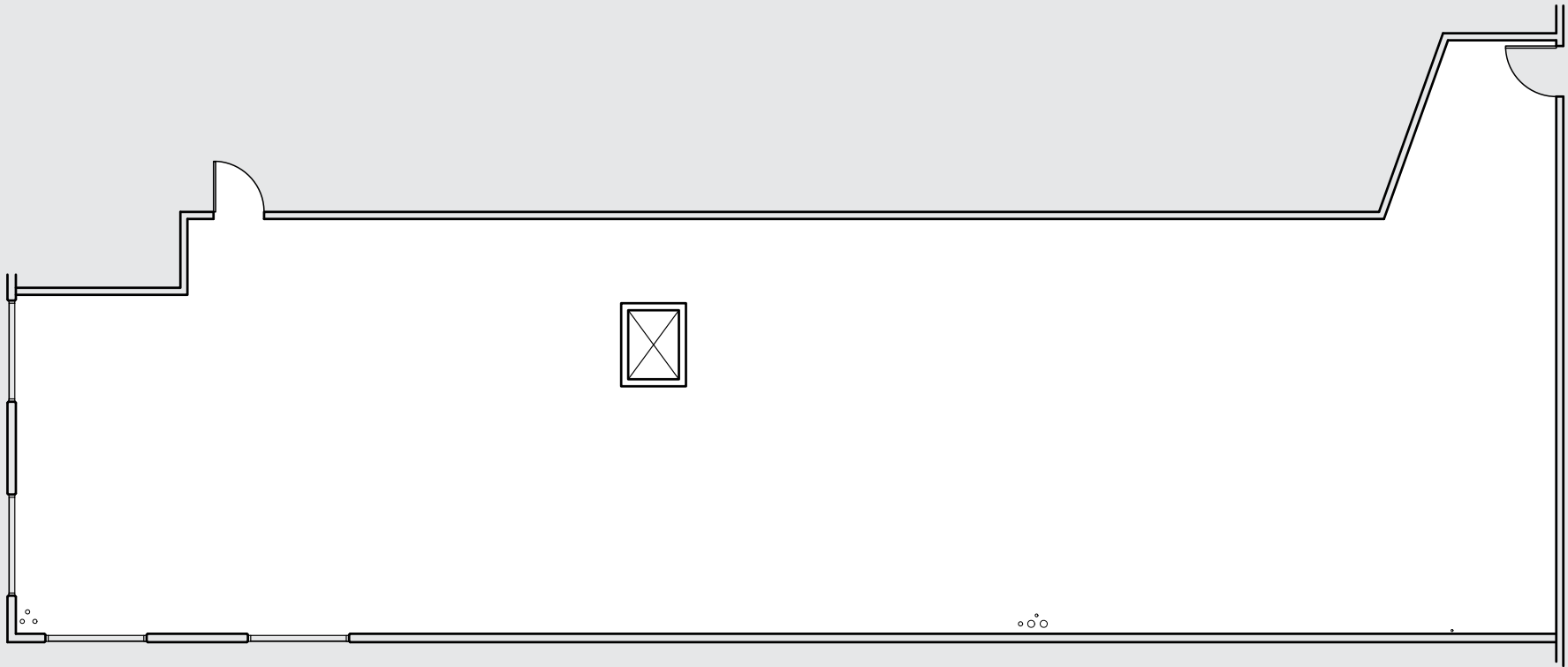


*Medical or Dental
Suite for Lease*

Citrus-Chapman Medical Building

1031 W. Chapman Avenue, Orange, CA 92868

Suite 202 - 2,853 SF

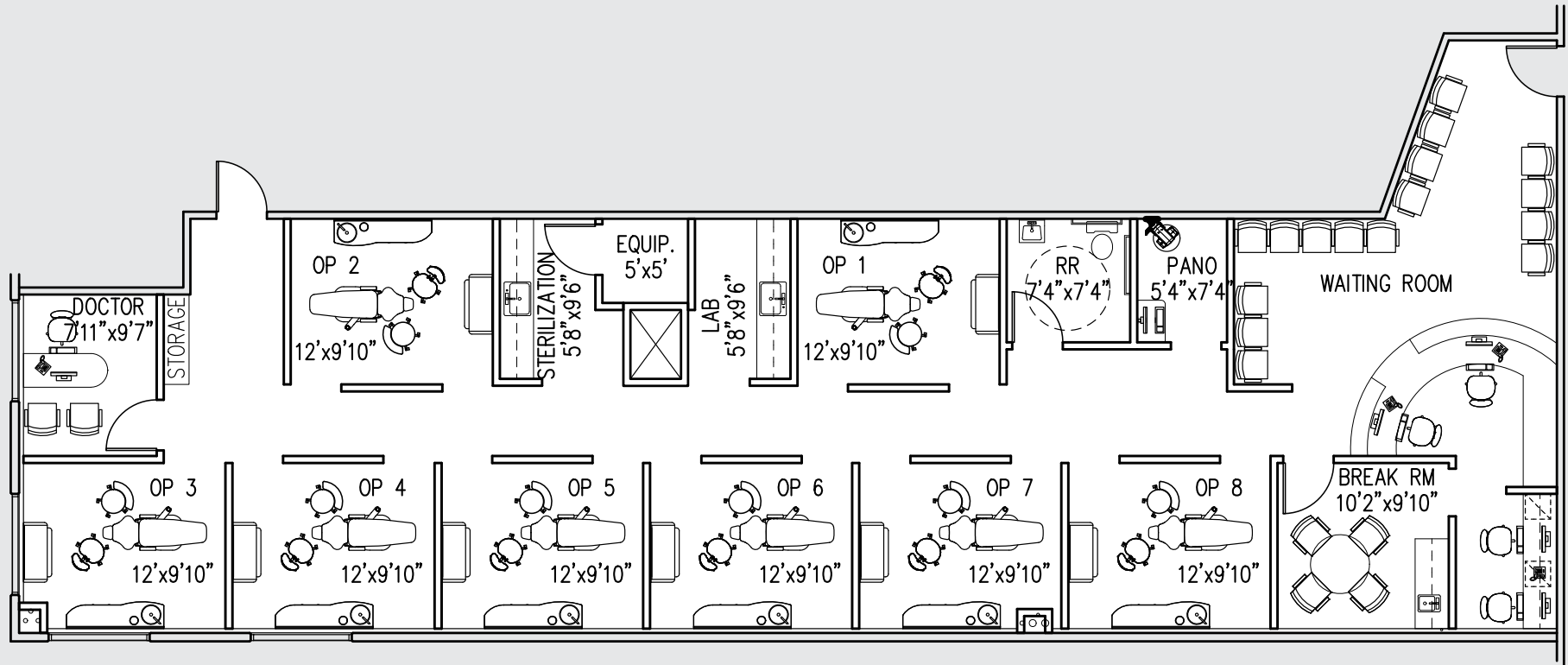


*Medical or Dental
Suite for Lease*

Citrus-Chapman Medical Building

1031 W. Chapman Avenue, Orange, CA 92868

Suite 202 - 2,853 SF
Spec Dental Plan

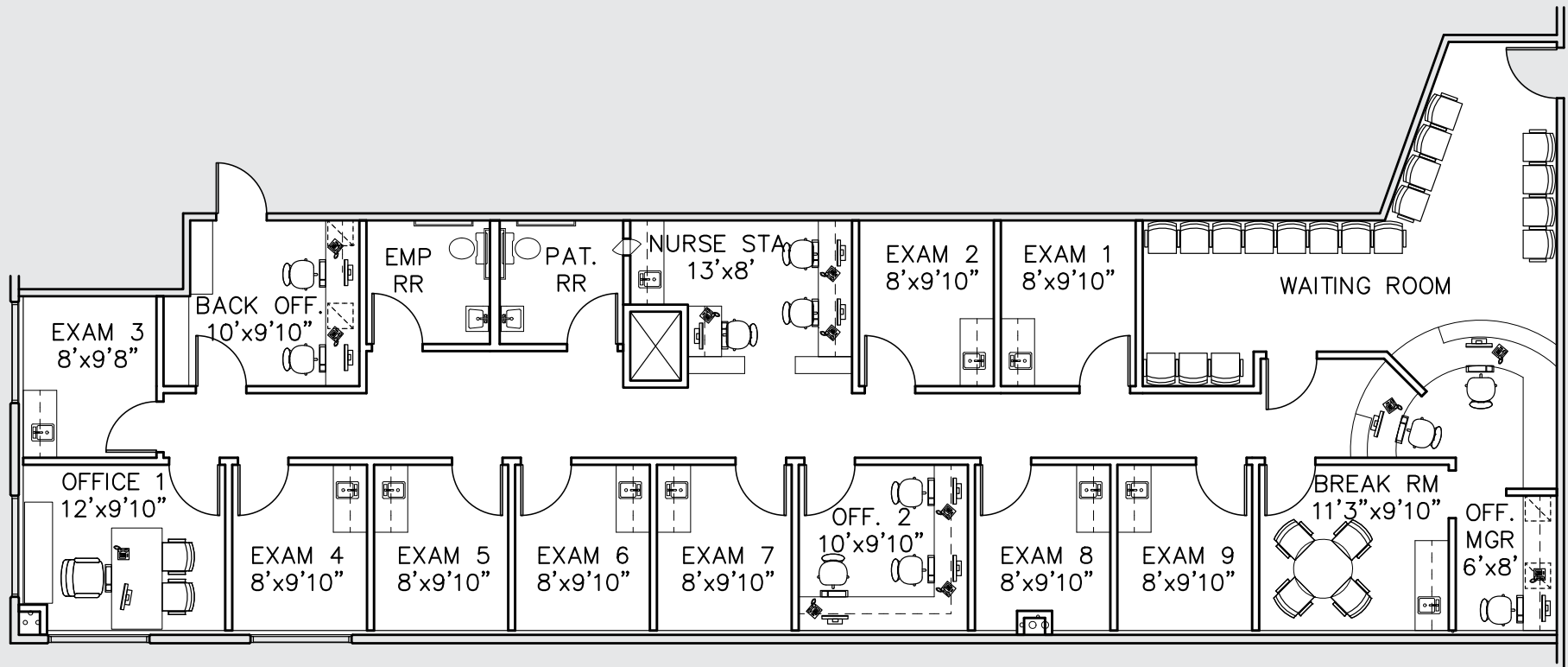


*Medical or Dental
Suite for Lease*

Citrus-Chapman Medical Building

1031 W. Chapman Avenue, Orange, CA 92868

Suite 202 - 2,853 SF
Spec Medical Plan

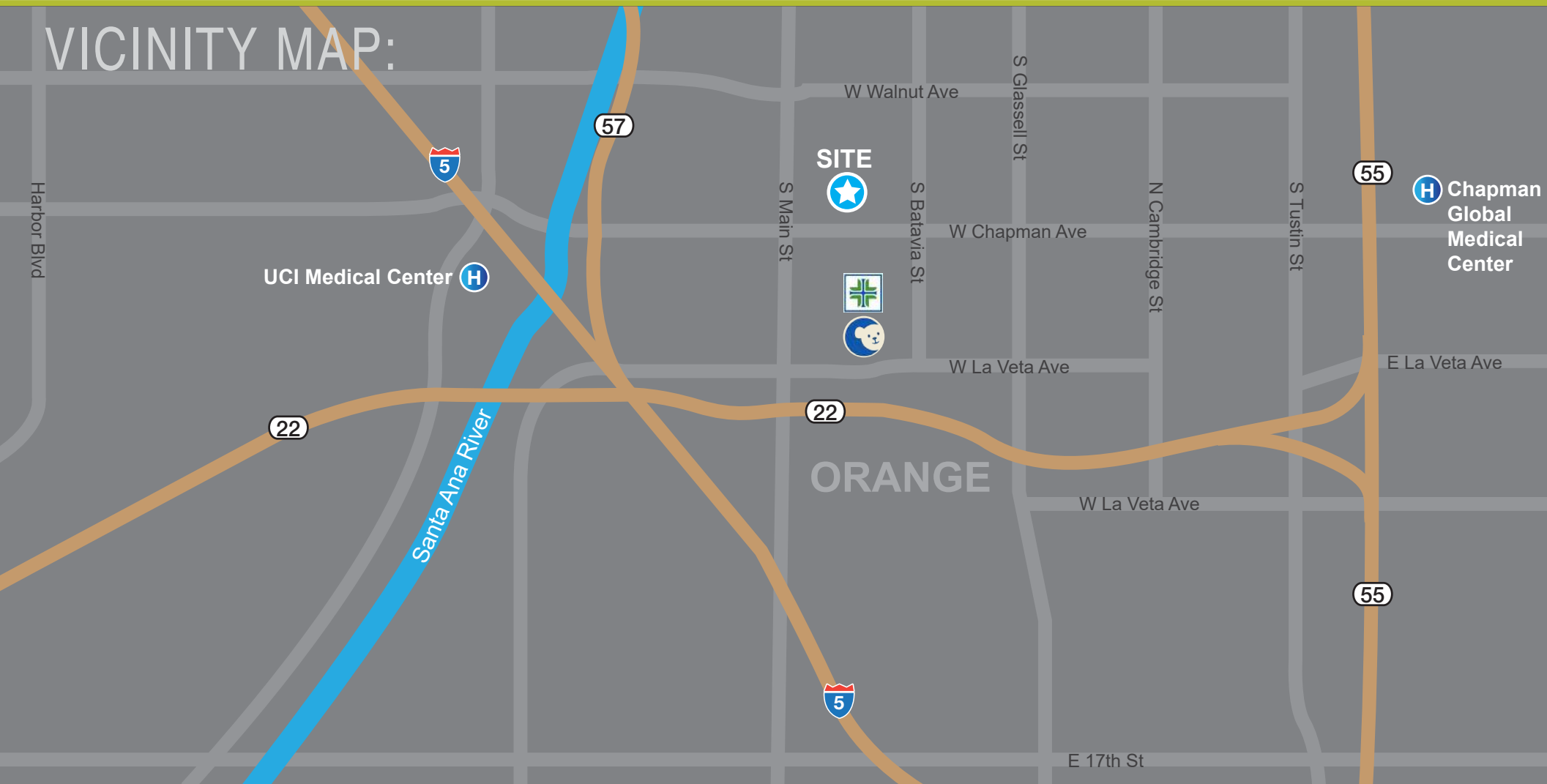


*Medical or Dental
Suite for Lease*

Citrus-Chapman Medical Building

1031 W. Chapman Avenue, Orange, CA 92868

VICINITY MAP:



*Medical or Dental
Suite for Lease*