

PACIFIC MEDICAL PLAZA







FOR LEASE

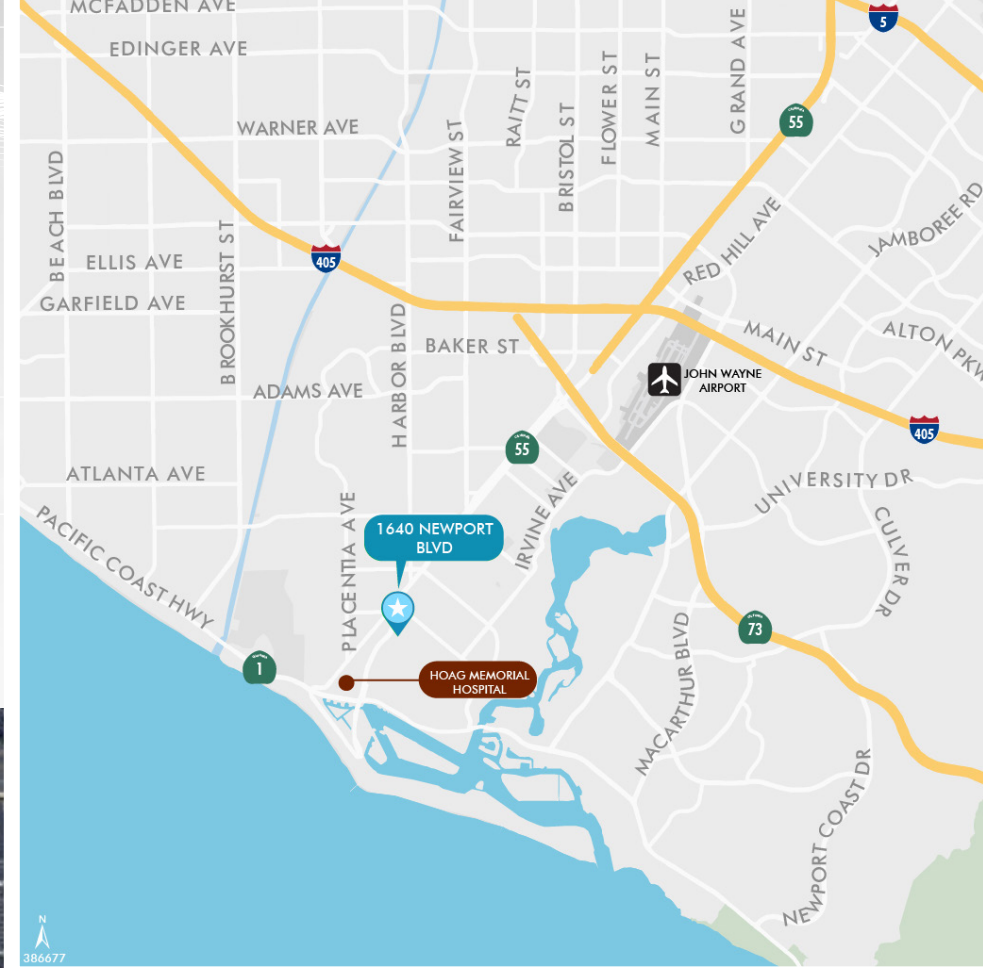
1,390 - 11,412 SF AVAILABLE

1640 Newport Blvd, Costa Mesa CA 92627



PROPERTY OVERVIEW

-  Ground floor highly improved surgery center available
-  High identity Newport Boulevard location
-  Convenient location near Hoag, retail and restaurants
-  Lab on-site
-  Abundant free structure and surface parking
-  Potential building signage



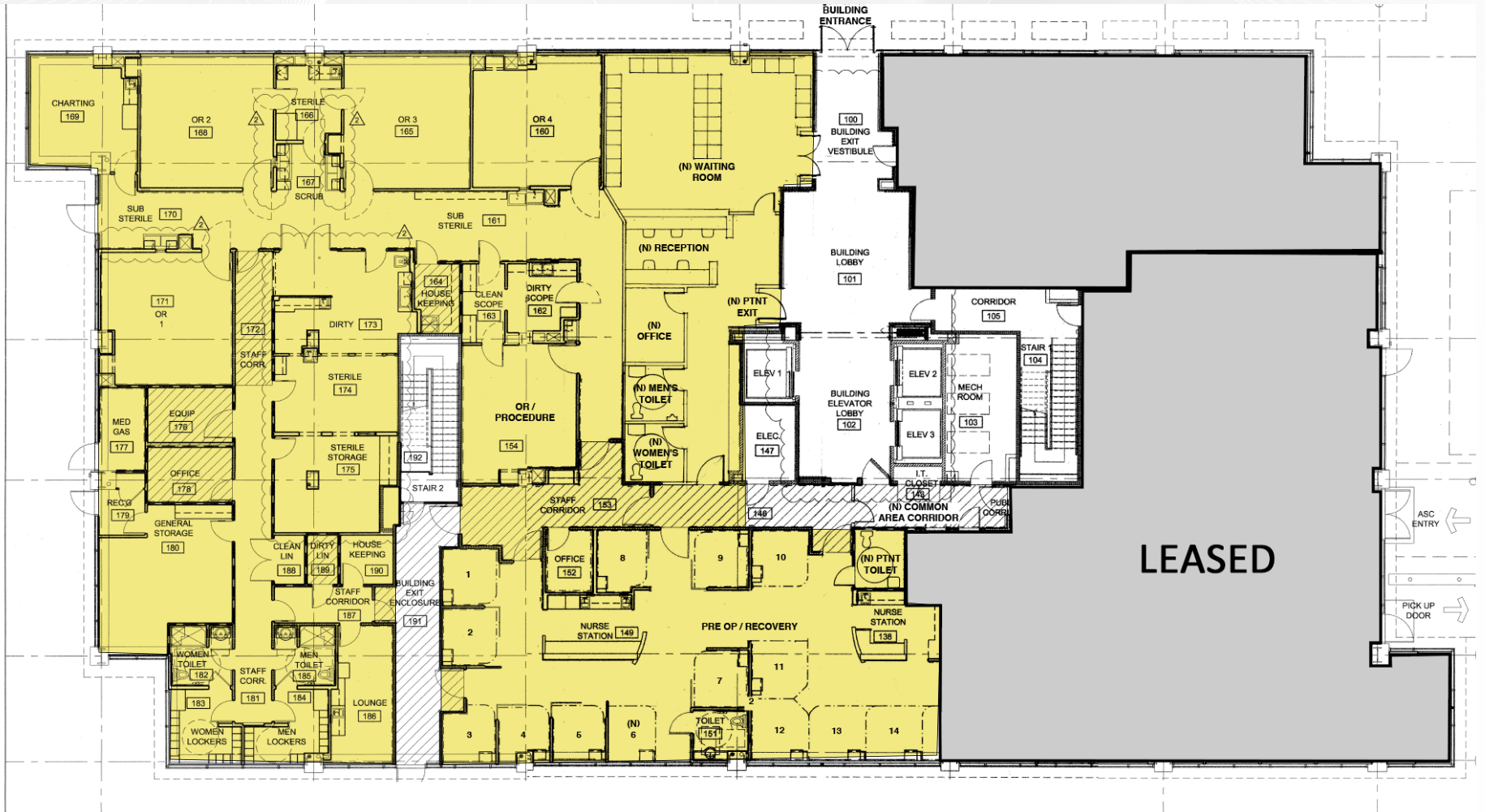
FLOOR PLAN

SUITE 100 | 11,412 RSF (*Divisible*)



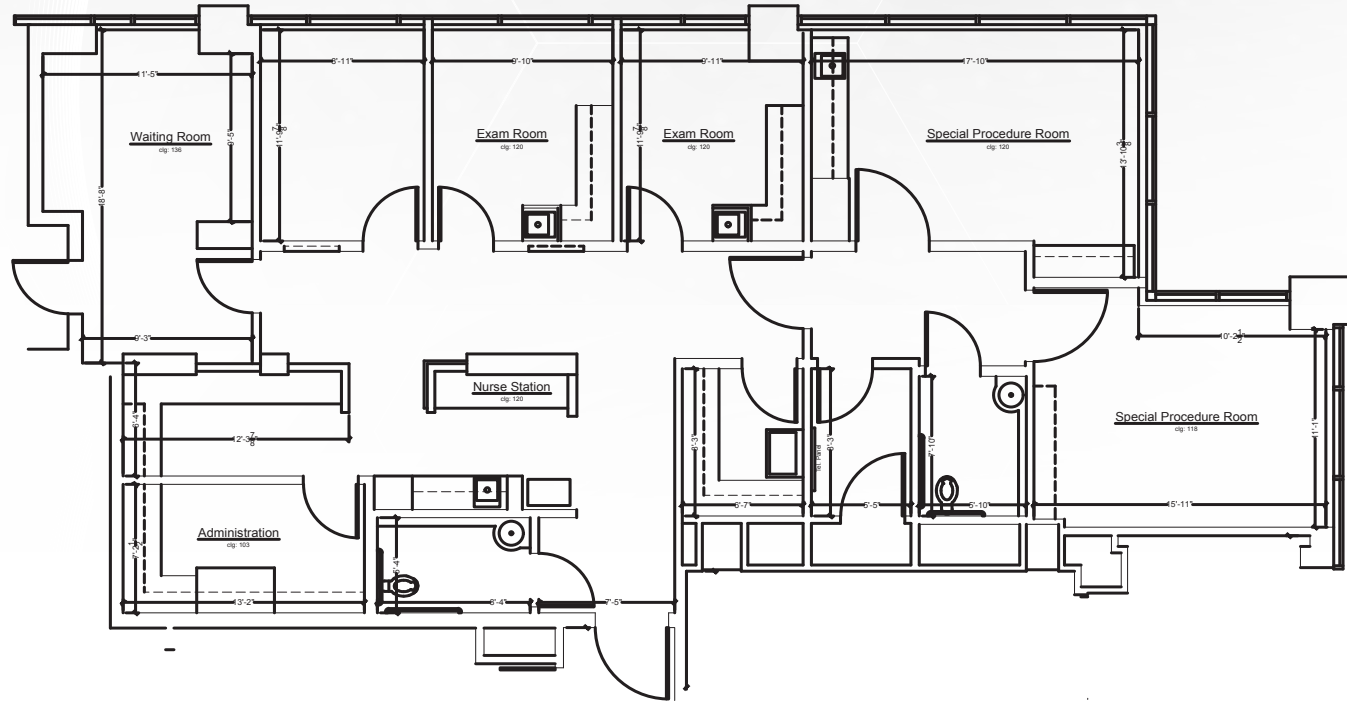
FLOOR PLAN

SUITE 100 | 11,412 RSF (Conceptual Surgery Center Plan)



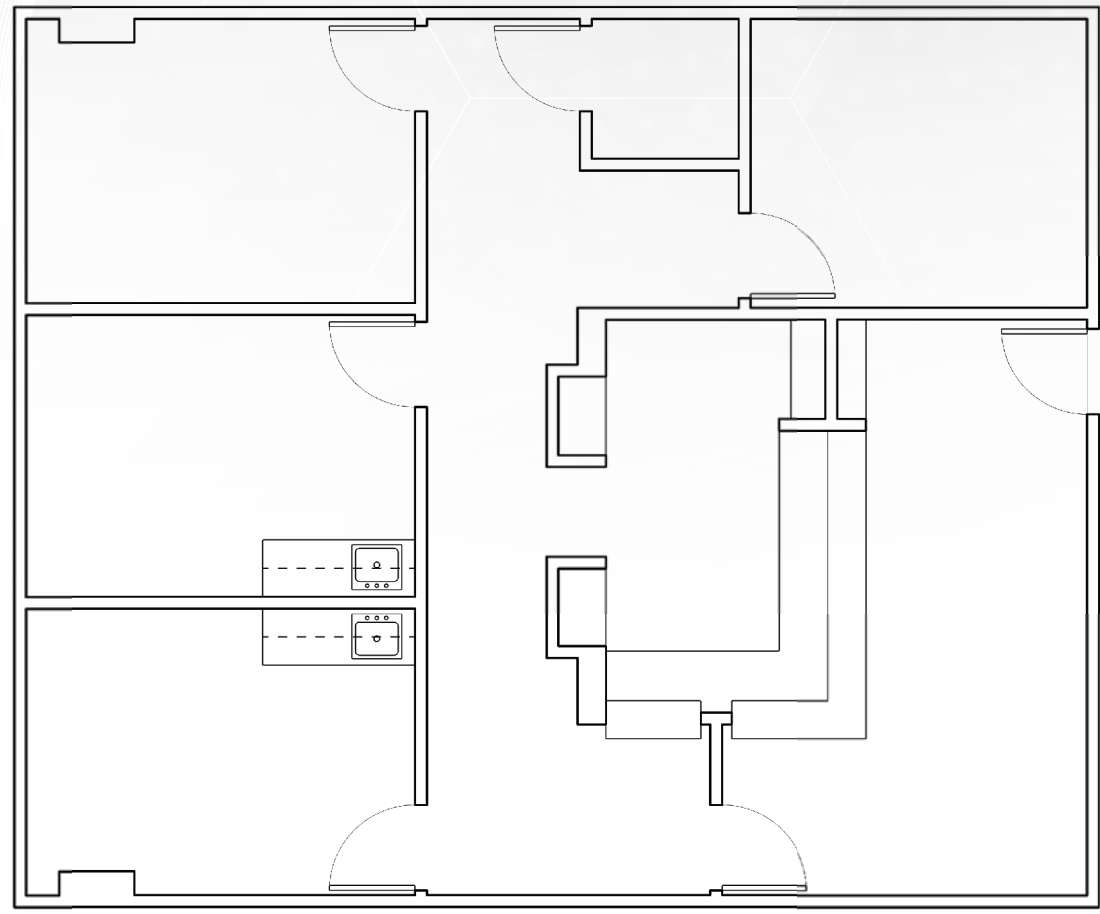
FLOOR PLAN

SUITE 150 | 2,600 RSF



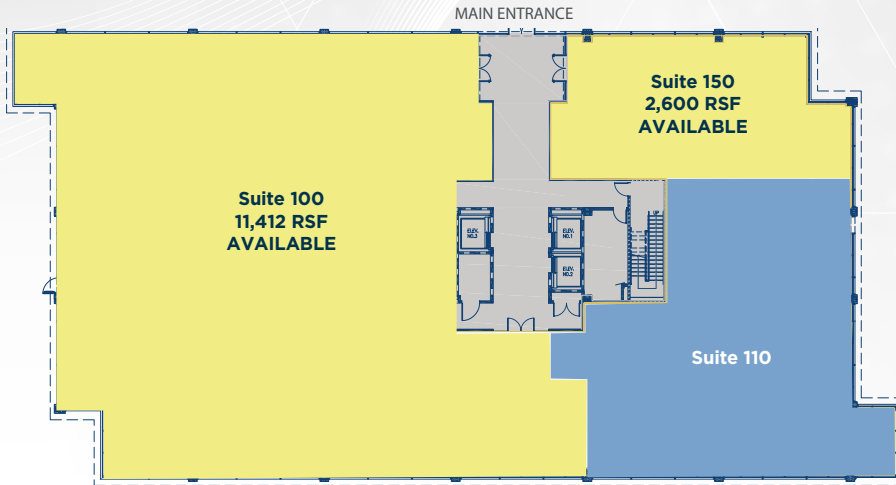
FLOOR PLAN

SUITE 445 | 1,390 RSF

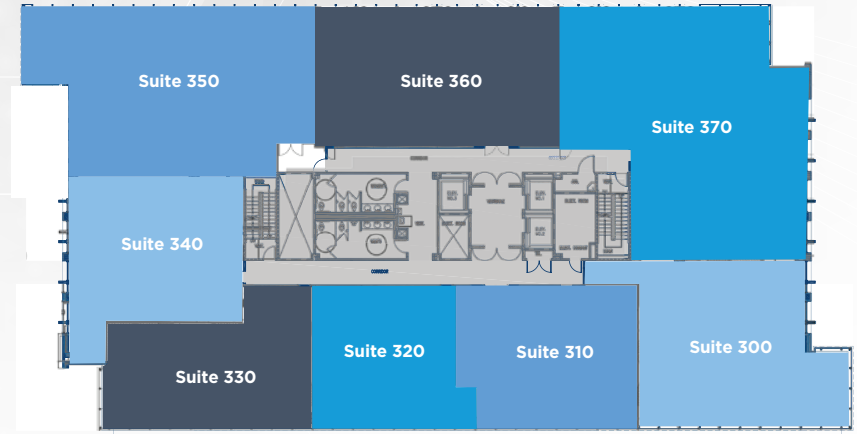


FLOOR PLANS

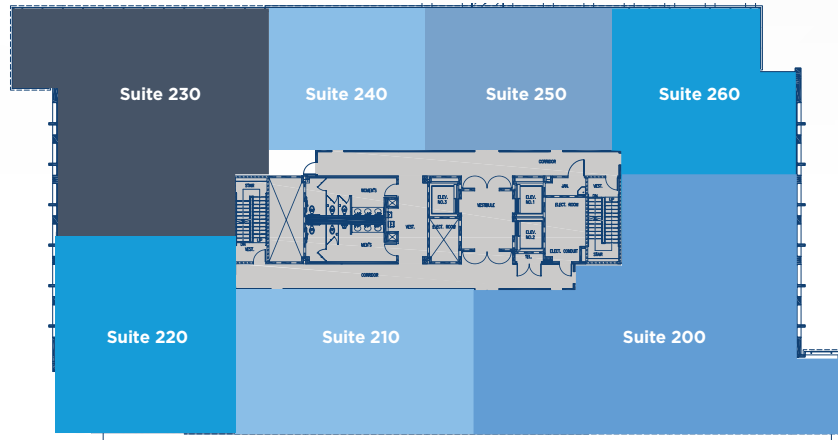
First Floor



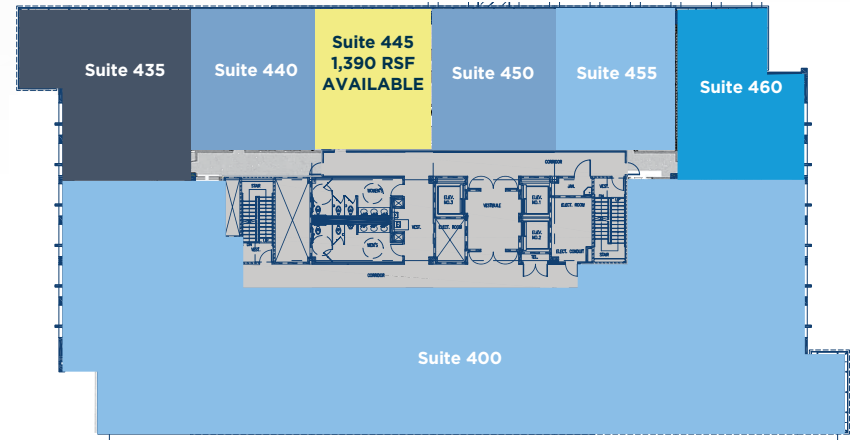
Third Floor



Second Floor



Fourth Floor



PACIFIC MEDICAL PLAZA

FOR LEASE

1,390 - 11,412 SF AVAILABLE

1640 Newport Blvd, Costa Mesa CA 92627

SITE PLAN

