

3500 *Bristol St.*  
south



MEDICAL SPACE FOR LEASE

*south coast, california*



# Property Information



**BUILDING AREA**  
+/- 18,942 SF



**STORIES**  
Two



**YEAR BUILT**  
1980



**MULTI- TENANT**



**CLASS**



**RECENTLY  
REMODELED**



Highlights

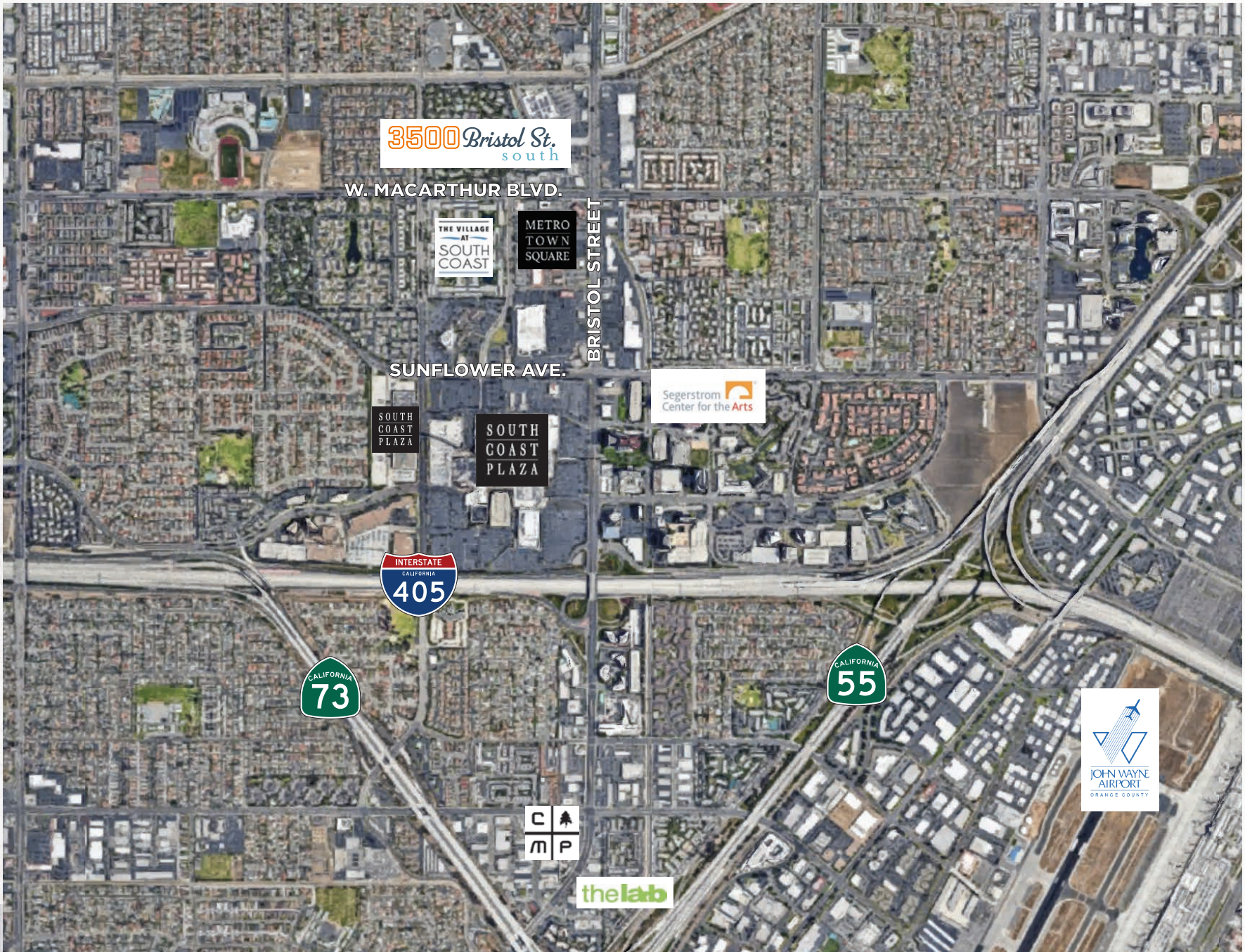


- Located at the corner of Bristol and MacArthur Blvd.
- Prime first floor medical office suite
- Newly completed exterior remodel and upgraded common area finishes
- Strong local demographics
- Immediately adjacent surface parking
- Close Proximity to South Coast Plaza and several dominate retail amenities nearby
- Great Access to 405, 55 & 73 Freeways
- Minutes from John Wayne Airport

**3500** *Bristol St.*  
south

MEDICAL SPACE FOR LEASE







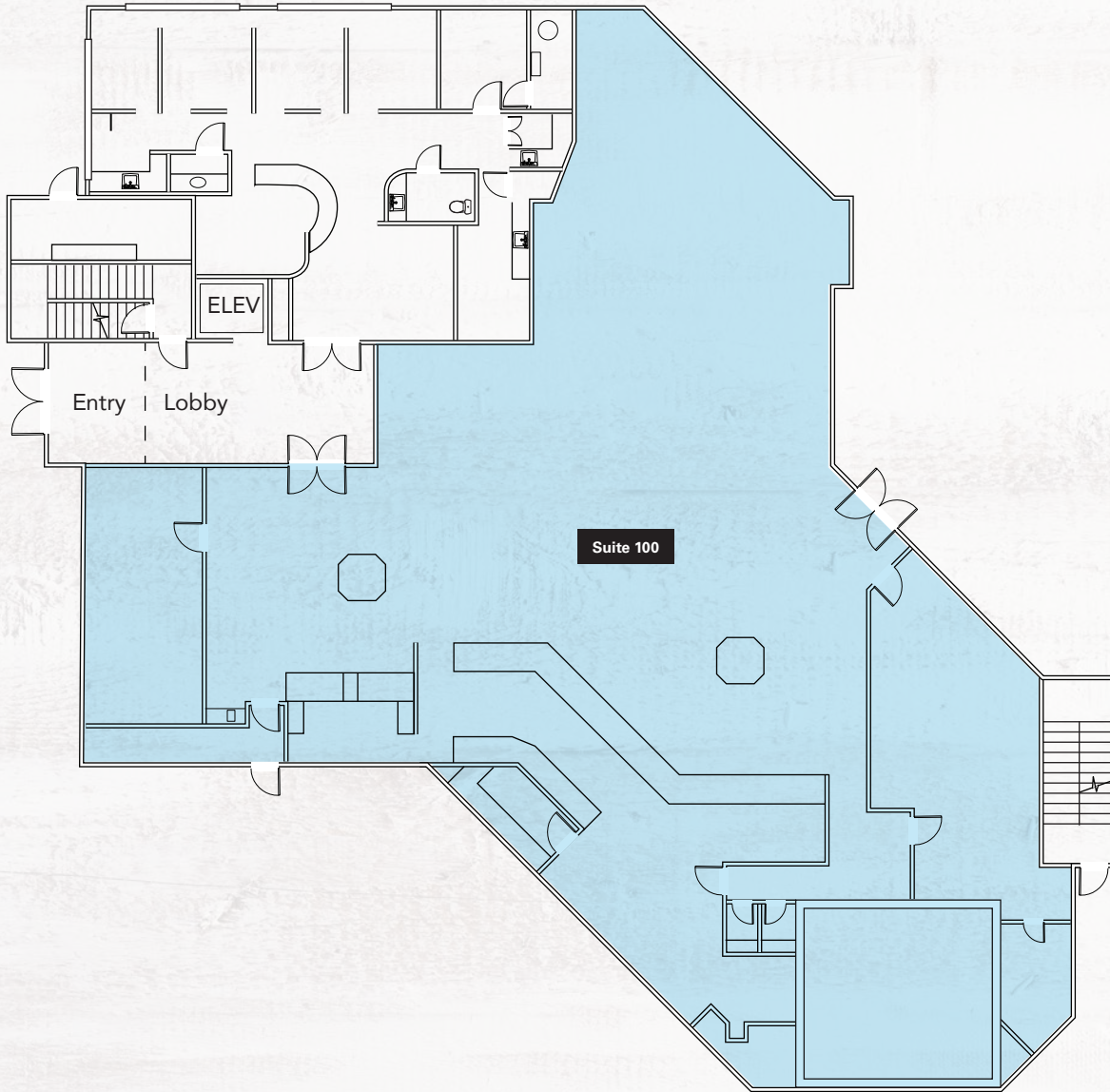
FLOOR PLAN

AVAILABILITY

Suite 100 | 6,894 SF

1st

floor plan



3500 *Bristol St.*  
south





# FLOOR PLAN

## AVAILABILITY

Suite 202 | 1,513 SF

Suite 205 | 1,908 SF

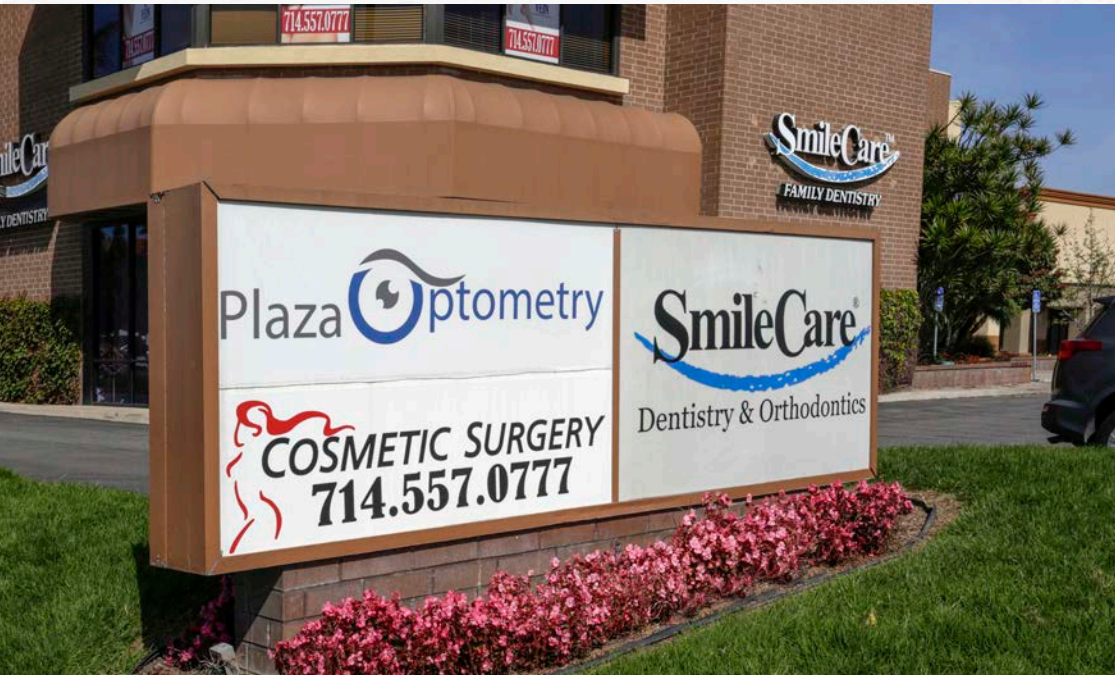
2nd

floor plan



3500 *Bristol St.*  
south





3500 *Bristol St.*  
south

